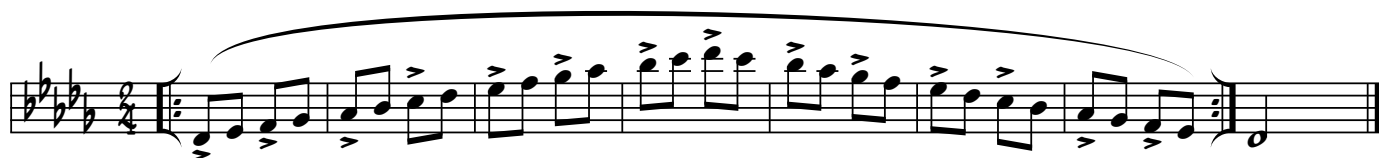
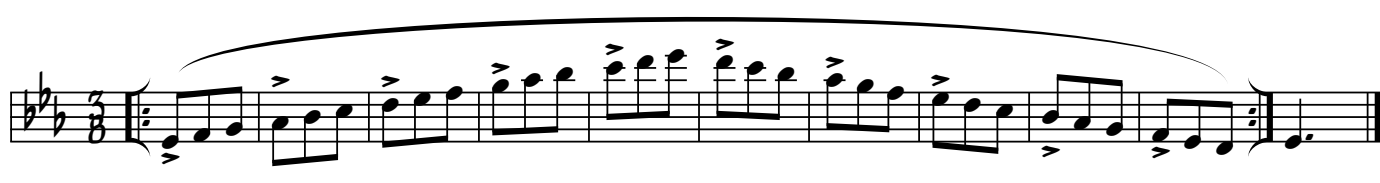
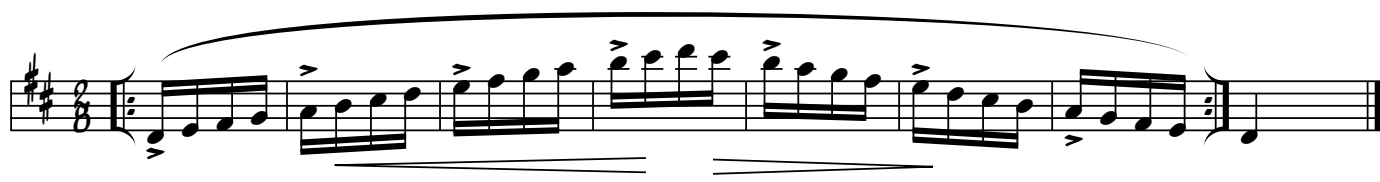
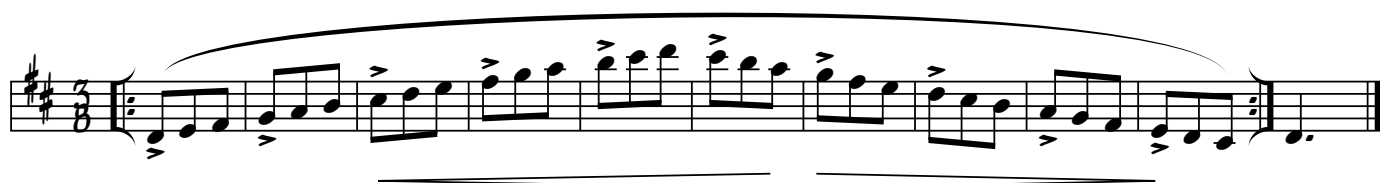


PREPARATORY EMBOUCHURE STUDIES

TOP TONES FOR THE TRUMPETER

WALTER M SMITH







The image displays a page of musical notation for 'Preparatory Embouchure Studies' by W.M. Smith. The page contains eight staves of music, each with a key signature of four sharps (F#, C#, G#, D#) and a 2/4 time signature. The first seven staves feature a continuous eighth-note melody with various articulations like accents and slurs. The eighth staff is a variation with slurs and accents. Each staff has a double bar line at the end.