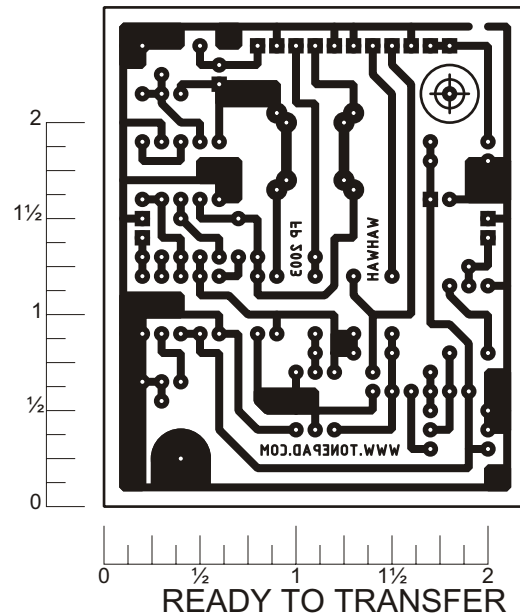
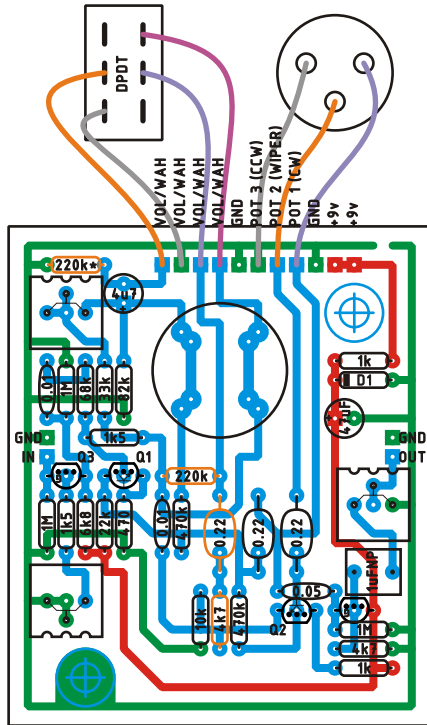


A variety of wah circuits can be built on this board, component values are for the Cry Baby. Parts outlined orange are for vol/wah mod, taken from the "Jen Wah-Vol Pedal" schematic. Input and output FET buffers are added for flexibility and can be bypassed if desired. The board also provides pads for different inductors. Some offboard components are not shown on the layout. Trademarks remain property of their owners.



Layout and presentation by Francisco Peña 2001 - 2003®.
All rights reserved. Authorization for personal use only.
any commercial use is forbidden.
Permission for posting/serving limited to
<http://www.tonepad.com>
Permission refused for posting from other sites.

NOTES:

- * use a jumper if not implementing the vol/wah switch
- ** Jumper if not adding "Q" control

