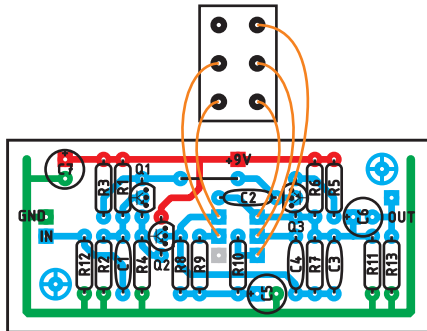
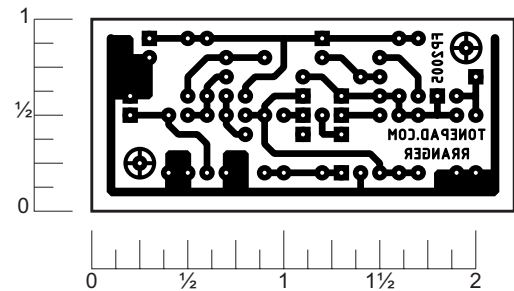


Build the Red Ranger on this layout. The Red Ranger doesn't have any potentiometers, instead it uses a 2PDT center off switch to select between bass, full and treble boosts. Off board components are not shown on the layout. Registered trademarks are property of their owners.



LAYOUT



READY TO TRANSFER

PARTS LIST

Resistors

R1 - 220k	R10 - 10k
R2 - 220k	R11 - 8.2k
R3 - 3k	R12 - 2M2 (2.2M)*
R4 - 10k	R13 - 2M2 (2.2M)*
R5 - 47 ohm	
R6 - 100k	* not in original
R7 - 100k	schematic
R8 - 27k	
R9 - 8k2 (8.2k)	

Capacitors

C1 - 0.047 μ F
C2 - 10pF
C3 - 10pF
C4 - 0.01 μ F
C5 - 4.7 μ F
C6 - 4.7 μ F
C7 - 100 μ F

Transistors

Q1 - 2N5088
Q2 - 2N5088
Q3 - 2N5087

Other

1 - DPDT center off switch

