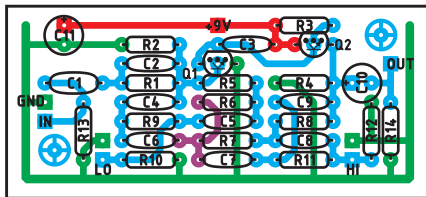
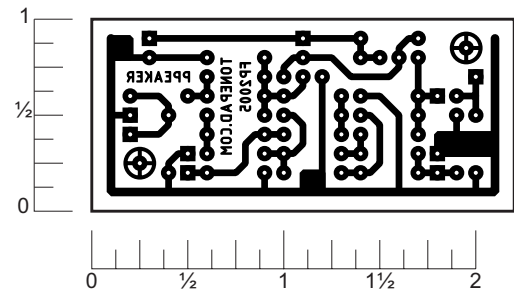


Build the Purple Peaker on this layout. The Purple Peaker doesn't have any potentiometers, instead it uses switches to modify the frequency response. Off board components are not shown on the layout. Registered trademarks are property of their owners.



LAYOUT



READY TO TRANSFER

PARTS LIST

Resistors

R1 - 150k	R10 - 470k
R2 - 68k	R11 - 39k
R3 - 33k	R12 - 470k
R4 - 4k7 (4.7k)	R13 - 2M2 (2.2M)*
R5 - 82k	R14 - 2M2 (2.2M)*
R6 - 82k	
R7 - 82k	
R8 - 82k	
R9 - 39k	

*not in original circuit

Capacitors

C1 - 0.1 μ F
C2 - 680pF
C3 - 100pF
C4 - 0.0047 μ F
C5 - 0.01 μ F
C6 - 0.0047 μ F
C7 - 390pF
C8 - 820pF
C9 - 390pF
C10 - 4.7 μ F
C11 - 100 μ F

Transistors

Q1 - 2N3904
Q2 - 2N3904

Other

2 - SPST switch

Schematic

