

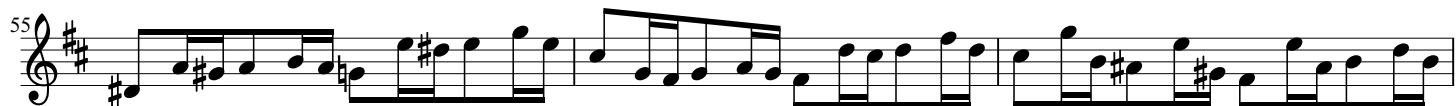
# Suite in h-moll für Querflöte

## Präludium.

The image displays a musical score for a flute prelude. It consists of ten staves of music, each beginning with a measure number (1, 6, 10, 12, 14, 16, 18, 21, 23, 25). The key signature is one sharp (F#), and the time signature is 3/4. The notation includes various musical symbols such as eighth notes, sixteenth notes, and rests, connected by beams and slurs. The music is written in a single melodic line on a treble clef staff.



**Allemande.**





Air.



Capriccio.

