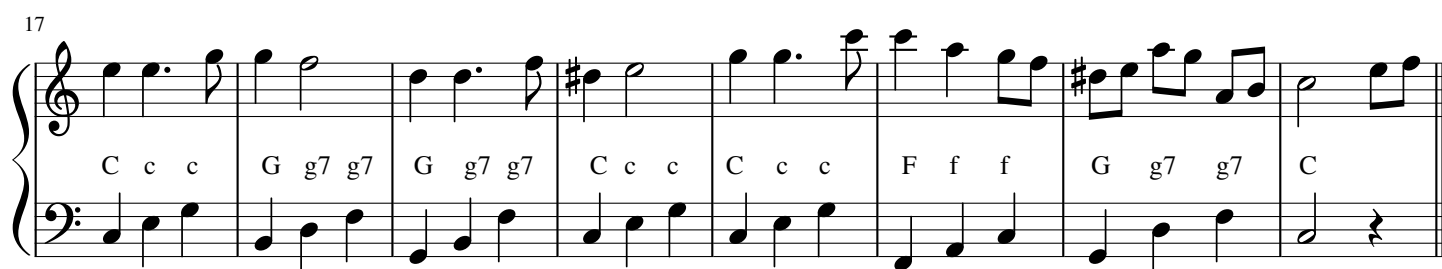
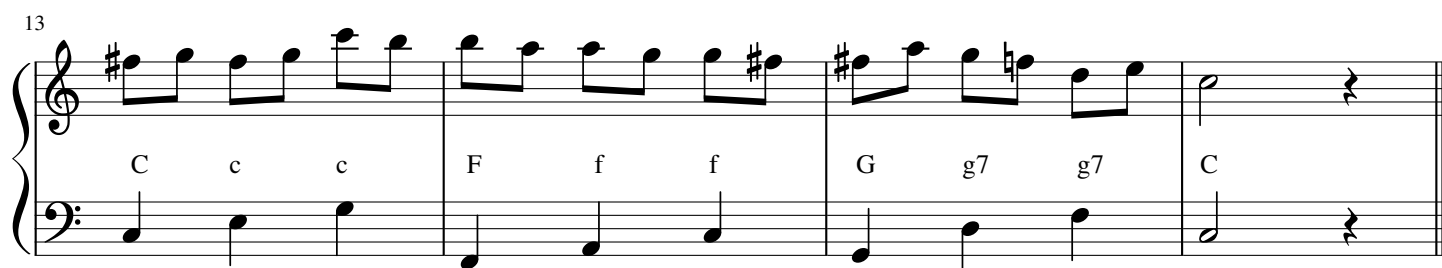
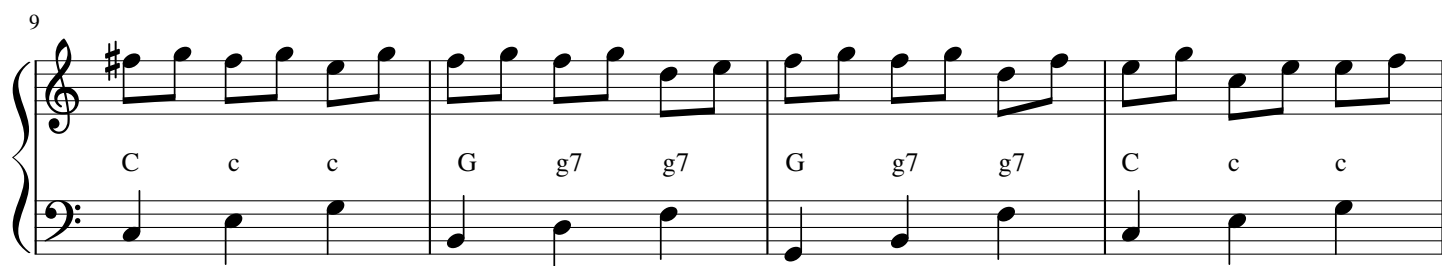
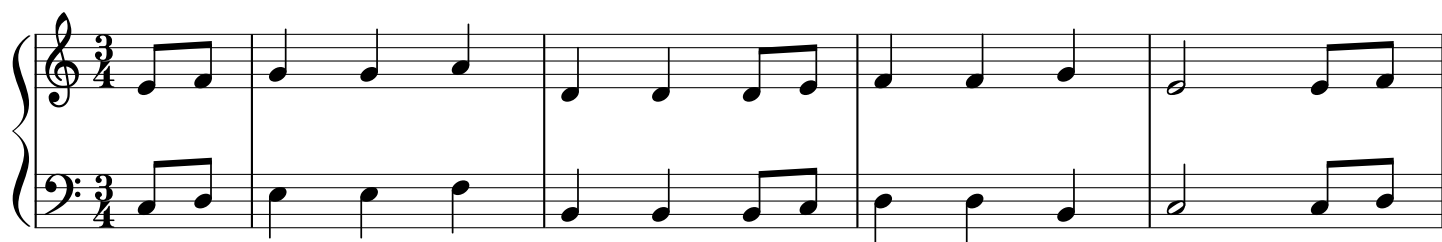


Schneeflöckchen, Weißbröckchen

Hediwg Haberkern (1869)



Musical score for piano, measures 25-32. The score is written for two staves (treble and bass clef) and includes chord labels below the notes.

Measure 25: Treble clef has notes C4, E4, G4. Bass clef has notes C3, E3, G3. Chord labels: C c c.

Measure 26: Treble clef has notes G4, B4, D5. Bass clef has notes G3, B3, D4. Chord labels: G g7 g7.

Measure 27: Treble clef has notes G4, B4, D5. Bass clef has notes G3, B3, D4. Chord labels: G g7 g7.

Measure 28: Treble clef has notes C4, E4, G4. Bass clef has notes C3, E3, G3. Chord labels: C c c.

Measure 29: Treble clef has notes C4, E4, G4. Bass clef has notes C3, E3, G3. Chord labels: C c c.

Measure 30: Treble clef has notes F4, A4, C5. Bass clef has notes F3, A3, C4. Chord labels: F f f.

Measure 31: Treble clef has notes G4, B4, D5. Bass clef has notes G3, B3, D4. Chord labels: G g7 g7.

Measure 32: Treble clef has notes C4, E4, G4. Bass clef has notes C3, E3, G3. Chord labels: C.