


# Ges

Grade	Frequency
F	1
C	1
G	1
C	1

# Fis




A musical staff diagram for the F major scale. The staff has five lines labeled F, C, G, and C from top to bottom. Above the staff are numbers 1, 3, 5, 7, 9, and 12. Fingering dots are placed on the staff: a black dot on the F line (finger 1), a black dot on the C line (finger 5), a red dot on the G line (finger 5), and a black dot on the C line (finger 9).

F

	1	3	5	7	9	12
F						●
C			●			
G					●	
C			●			

E




	1	3	5	7	9	12
F						●
C		●				
G					●	
C		●				

A


	1	3	5	7	9	12
F		●				
C					●	
G	●					
C					●	

As



	1	3	5	7	9	12
F		●				
C				●		
G	●					
C					●	

# Gis




	1	3	5	7	9	12
F		●				
C					●	
G	●					
C					●	

G

1 3 5 7 9 12

F  
C  
G  
C

**B**



	1	3	5	7	9	12
F				●		
C						●
G		●				
C						●


Bb

A musical staff with four lines labeled F, C, G, and C from top to bottom. Above the staff, the numbers 1, 3, 5, 7, 9, and 12 are placed over the first six lines. Four notes are placed on the staff: a black dot on the 5th line (F), a red dot on the 3rd line (G), a black dot on the 9th line (C), and a red dot on the 12th line (C).

# Ais

A musical staff with five lines. The lines are labeled from top to bottom: F, C, G, C. Above the staff, the numbers 1, 3, 5, 7, 9, 12 are written. The notes are placed on the lines: A (black dot on the 5th line), C (red dot on the 3rd line), and E (black dot on the 1st line).

# Dis



A musical staff diagram for the instrument 'Dis'. The staff has four lines labeled F, C, G, and C from top to bottom. Above the staff, the numbers 1, 3, 5, 7, 9, and 12 are placed. There are four dots on the staff: a red dot on the bottom line (C) at position 3, a black dot on the second line from the bottom (G) at position 7, a black dot on the top line (F) at position 9, and a black dot on the third line from the bottom (C) at position 12.


D

A musical staff with a treble clef and a key signature of one sharp (F#). The staff contains four notes: a red C4 on the first line, a black C4 on the second line, a black G4 on the fourth line, and a black D5 on the fifth line. The notes are labeled C, C, G, and D from bottom to top.

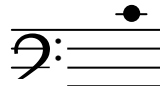
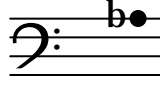
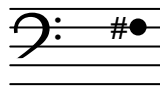
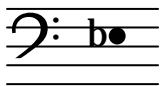
# Des

A musical staff for the key of D major (one sharp) showing the notes D, E, F#, G, A, B, C. The notes are placed on a five-line staff with a key signature of one sharp (F#). The notes are: D (line 1, black), E (space 1, red), F# (line 2, black), G (space 2, red), A (line 3, black), B (space 3, red), and C (line 4, black). The staff is labeled with F, C, G, C on the left and 1, 3, 5, 7, 9, 12 on the right.

# Cis



	1	3	5	7	9	12
F					●	
C	●					
G			●			
C	●					



<p>Fis</p>	<p>F</p>	<p>E</p>	<p>Es</p>
<p>As</p>	<p>Gis</p>	<p>G</p>	<p>Ges</p>
<p>B</p>	<p>Bb</p>	<p>Ais</p>	<p>A</p>
<p>C</p>			