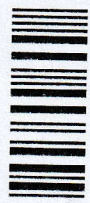


L!

Handwritten musical score on three staves. The first staff contains a treble clef, a key signature of one flat (Bb), and a series of eighth and quarter notes. The second staff begins with a circled letter 'B' and a measure rest, followed by a treble clef, a key signature of one flat, and a series of notes. The third staff begins with a measure rest, followed by a treble clef, a key signature of one flat, and a series of notes. Chord symbols are written above the staves: Gm, F, Eb, A7, and D. Handwritten numbers 3, 2, 4, 2, and 3 are written below the staves. A large handwritten 'L!' is on the left. A large handwritten 'D' is on the right.



000005