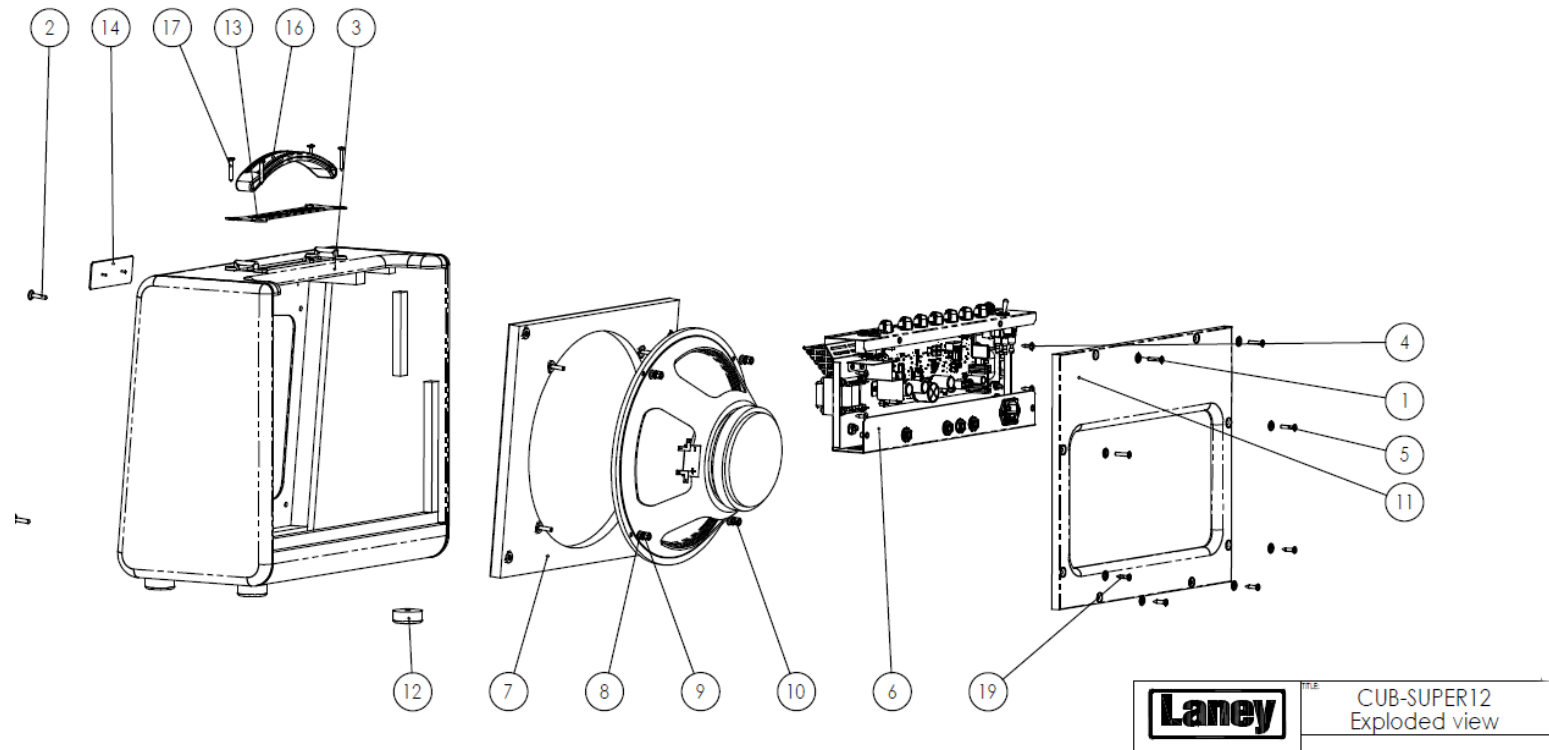


To gain access to the tubes, the chassis has to be removed from the cabinet. You need to remove the rear back plate and then the 4 screws (2 each side) of the chassis.



Looking at the PCB side V3 is the phase splitter tube.

When changing output tubes, the amp must be re-biased for the new tubes.

If you are unsure of how to do this, please consult a qualified repair tech due to the high voltages found inside the amp.