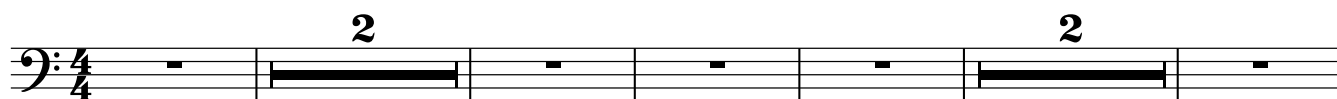


# Too Young To Die

From 'Emergency On Planet Earth'



10



14



17



20



23



26



29



32



34



36



39



41



44



47



50



53



56



59



62



65



67



69



72



75



77



80



82



84



87



90



93



The bass line of 'The Rose Tree' is written on a single staff in bass clef. It begins with a key signature of one flat (B-flat) and a common time signature. The melody consists of eighth and sixteenth notes, with some measures containing rests. The notation includes various accidentals (sharps, flats, naturals) and a repeat sign at the end.

The bass line of 'The Rose Tree' is written on a single staff with a bass clef. It consists of three measures. The first measure contains a half note G2, a quarter rest, a quarter note A2, a quarter note B2, and a quarter note C3. The second measure contains a half note D2, a quarter rest, a quarter note E2, a quarter note F2, and a quarter note G2. The third measure contains a half note A2, a quarter rest, a quarter note B2, a quarter note C3, and a quarter note D3. The key signature has one sharp (F#) and the time signature is 4/4.

Musical notation for the bass line of 'The Rose Tree'. The key signature has one flat (B-flat). The melody is written on a single staff with a bass clef. It begins with a quarter note G2, followed by a quarter rest, then an eighth note F2, a quarter note E2, and a quarter note D2. The melody continues with various intervals, including a descending line from G2 to D2, and ends with a quarter note G2.

Musical notation for the bass line of 'The Rose Tree'. The notation is in bass clef and includes various musical symbols such as notes, rests, and accidentals.

Musical notation for the bass line of 'The Rose Tree'. The key signature has one sharp (F#) and one flat (Bb). The melody is written in a single line of music.

114

Example 114

Example 12.5 shows a bass line with a sequence of eighth and sixteenth notes, including various accidentals (flats, sharps, naturals) and rests.

120



129



132



134



136



139



141



144



147



149



152



154

