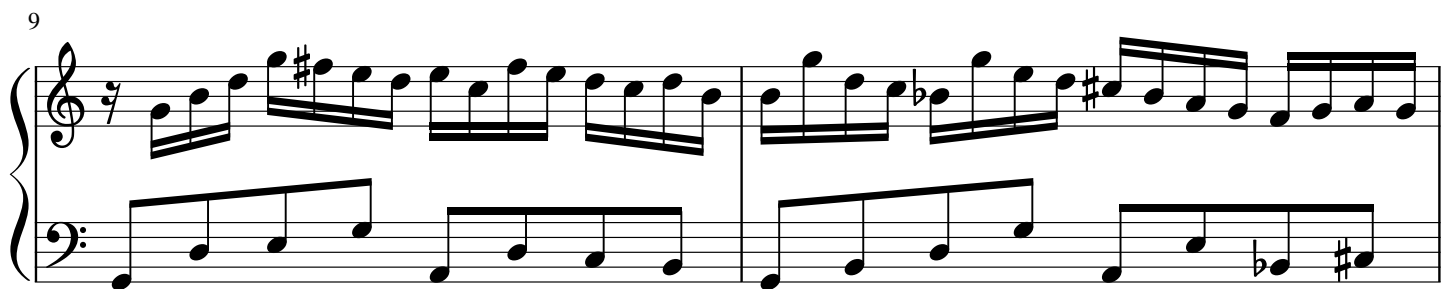
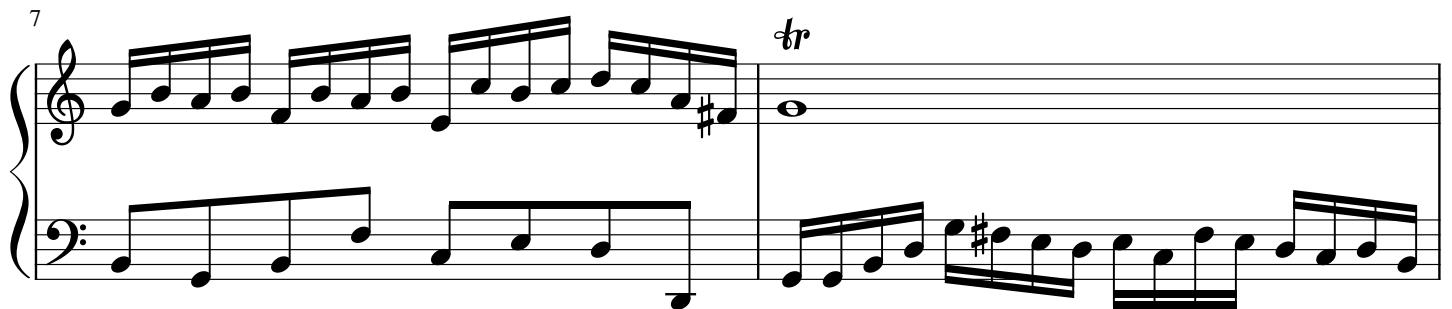
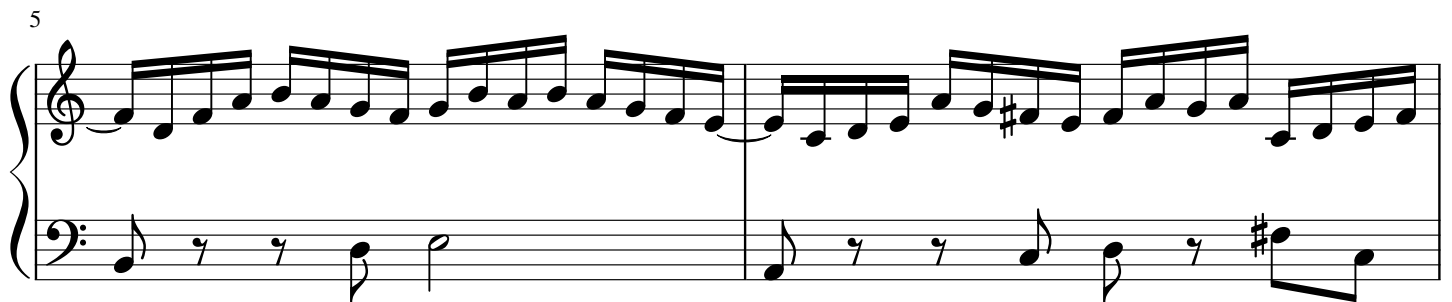
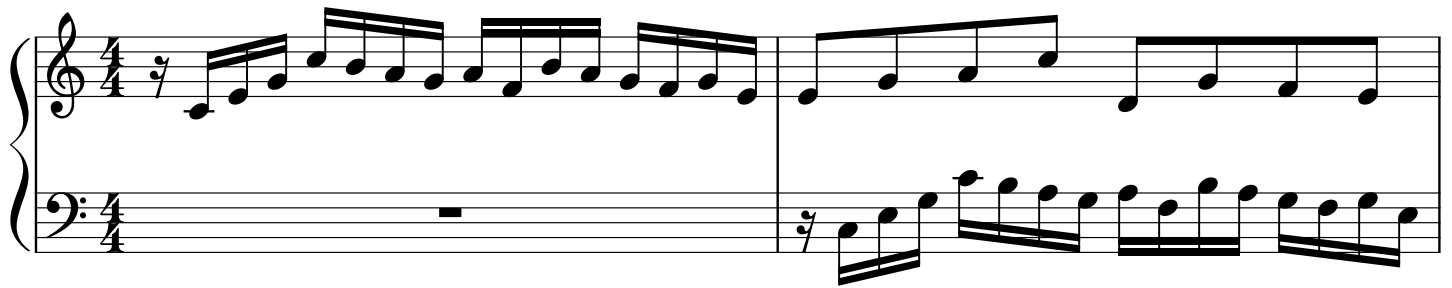


# Invention

Thomas Hendel

$\text{♩} = 70$



11

Measures 11 and 12 of a piano piece. Measure 11 features a treble staff with a half note G4, a quarter note F#4, and a half note E4, and a bass staff with a half note D3, a quarter note C3, and a half note B2. Measure 12 features a treble staff with a half note D4, a quarter note C#4, and a half note B3, and a bass staff with a half note A2, a quarter note G2, and a half note F#2. The key signature has one flat (B-flat).

13

Measures 13 and 14 of a piano piece. Measure 13 features a treble staff with a half note G4, a quarter note F#4, and a half note E4, and a bass staff with a half note D3, a quarter note C3, and a half note B2. Measure 14 features a treble staff with a half note D4, a quarter note C#4, and a half note B3, and a bass staff with a half note A2, a quarter note G2, and a half note F#2. The key signature has one flat (B-flat).

15

Measures 15 and 16 of a piano piece. Measure 15 features a treble staff with a half note G4, a quarter note F#4, and a half note E4, and a bass staff with a half note D3, a quarter note C3, and a half note B2. Measure 16 features a treble staff with a half note D4, a quarter note C#4, and a half note B3, and a bass staff with a half note A2, a quarter note G2, and a half note F#2. The key signature has one flat (B-flat).

17

Measures 17 and 18 of a piano piece. Measure 17 features a treble staff with a half note G4, a quarter note F#4, and a half note E4, and a bass staff with a half note D3, a quarter note C3, and a half note B2. Measure 18 features a treble staff with a half note D4, a quarter note C#4, and a half note B3, and a bass staff with a half note A2, a quarter note G2, and a half note F#2. The key signature has one flat (B-flat).

19

Measures 19 and 20 of a piano piece. Measure 19 features a treble staff with a half note G4, a quarter note F#4, and a half note E4, and a bass staff with a half note D3, a quarter note C3, and a half note B2. Measure 20 features a treble staff with a half note D4, a quarter note C#4, and a half note B3, and a bass staff with a half note A2, a quarter note G2, and a half note F#2. The key signature has one flat (B-flat).