

# Kleines Präludium in c-moll

BWV 934

Johann Sebastian Bach

Measures 1-4 of the first system. The treble clef contains a melodic line with slurs and trills. The bass clef contains a supporting line with fingerings 2, 5, 3, 4, 2, 4.

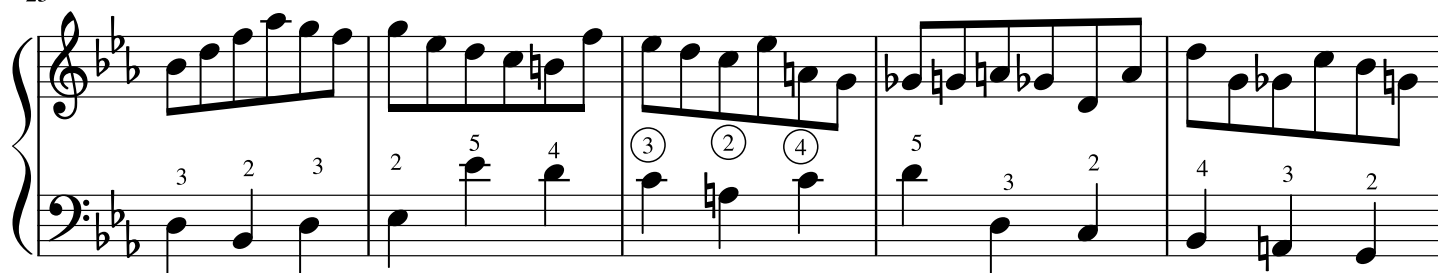
Measures 5-9 of the second system. The treble clef continues the melodic line. The bass clef contains a supporting line with fingerings 2, 5, 4, 3, 2, 3, 2, 5, 3, 4, 4, 5, 3.

Measures 10-14 of the third system. The treble clef continues the melodic line. The bass clef contains a supporting line with fingerings 4, 5, 2, 3, 4, 3, 5, 2, 3, 4, 2, 4, 3, 4, 3.

Measures 15-20 of the fourth system. The treble clef continues the melodic line. The bass clef contains a supporting line with fingerings 2, 3, 2, 3, 4, 3, 3, 4, 5, 3, 2, 3, 4, 5, 4, 3, 4, 3, 4, 2, 3.

Measures 21-24 of the fifth system. The treble clef continues the melodic line. The bass clef contains a supporting line with fingerings 2, 5, 4, 5, 3, 2, 4, 2, 4, 2, 5, 4.

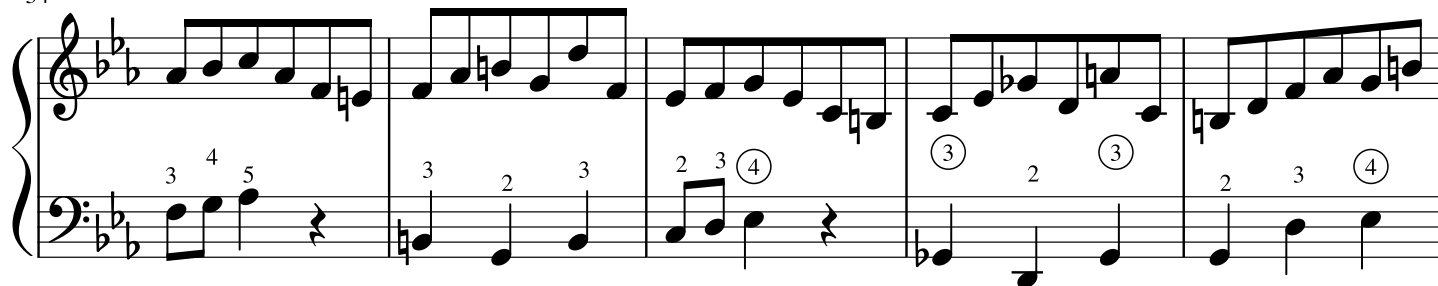
25



30



34



39

